



LIVING ROOM
14'-11" x 13'-2"

DINING/KITCHEN
12'-10" x 13'-7"

LAUNDRY

BATH #3

FOYER

CLO

LANDING

LANDING

PORCH

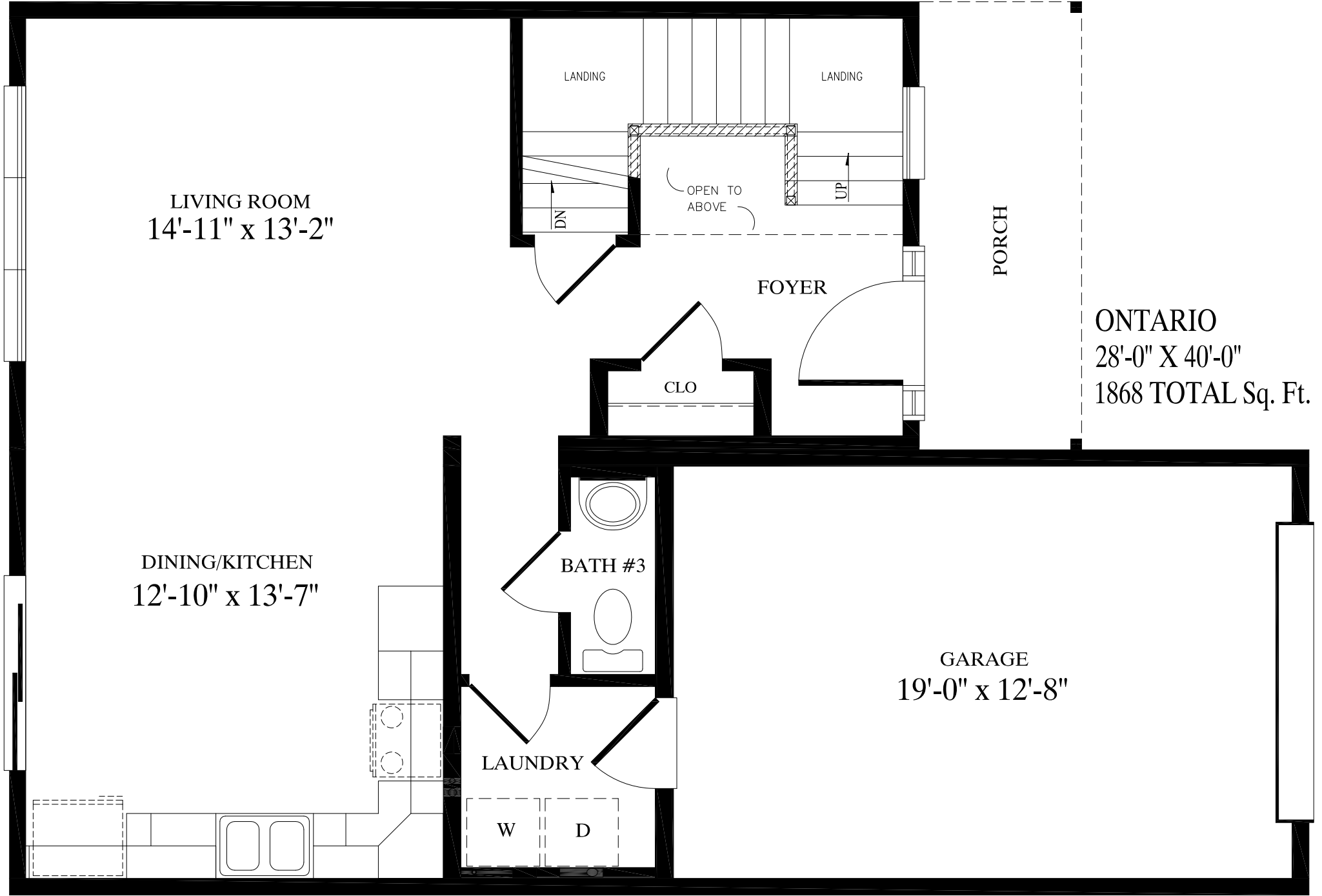
GARAGE
19'-0" x 12'-8"

ONTARIO
28'-0" X 40'-0"
1868 TOTAL Sq. Ft.

DN
UP
OPEN TO ABOVE

W

D



BEDROOM #3
12'-6"x10'-5"

CLO

DN

OPEN TO BELOW

BATH #1

CLO

CLO

HALL

BEDROOM #1
18'-7"x12'-10"

LIN

BATH #2

BEDROOM #2
9'-3" x 12'-8"

CLO

