

LIVING ROOM
17'-1" x 12'-10"

DINING ROOM
8'-11" x 13'-7"

KITCHEN
8'-0" x 12'-10"

FOYER

PORCH

CAYUGA
28'-0" X 44'-0"
2088 TOTAL Sq. Ft.

BATH #3

LAUNDRY

W

D

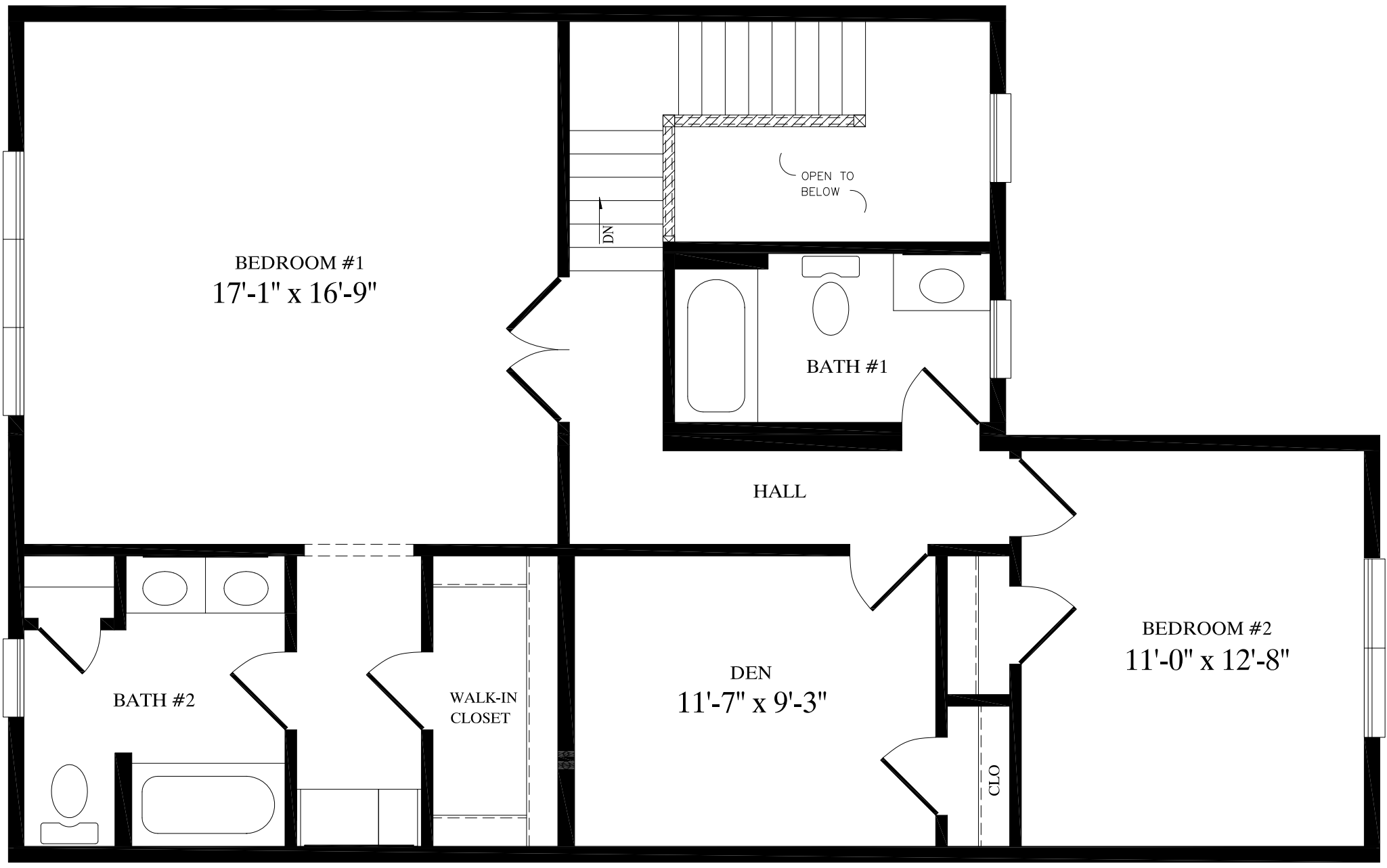
CLO

OPEN TO ABOVE

UP

DN

GARAGE
19'-4" x 12'-8"



BEDROOM #1
17'-1" x 16'-9"

OPEN TO
BELOW

DN

BATH #1

HALL

DEN
11'-7" x 9'-3"

BATH #2

WALK-IN
CLOSET

CLO

BEDROOM #2
11'-0" x 12'-8"

