

LIVING ROOM  
17'-4" x 9'-11"

KITCHEN  
8'-6" x 7'-10"

DINING ROOM  
10'-9" x 11'-4"

FOYER

CLO

LANDING

UP

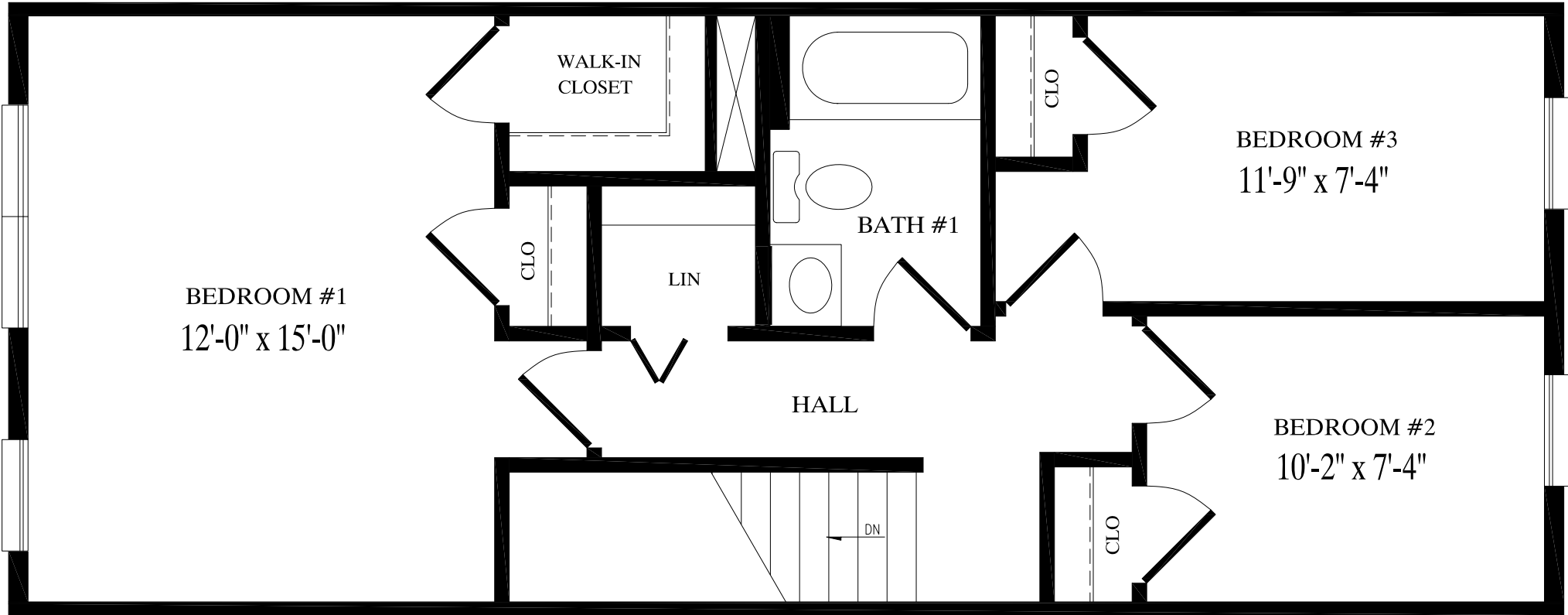
DN

HALL

BATH #2

W  
D

TEMPLETON  
16'-0" X 40'-0"  
1,253 TOTAL Sq. Ft.



BEDROOM #1  
12'-0" x 15'-0"

WALK-IN  
CLOSET

CLO

LIN

BATH #1

HALL

DN

CLO

BEDROOM #3  
11'-9" x 7'-4"

BEDROOM #2  
10'-2" x 7'-4"

CLO