

DINING ROOM
9'-7" X 9'-8"

KITCHEN
9'-7" X 9'-7"

LIVING ROOM
12'-0" X 16'-6"

ON SITE
FURNACE

PAN

W

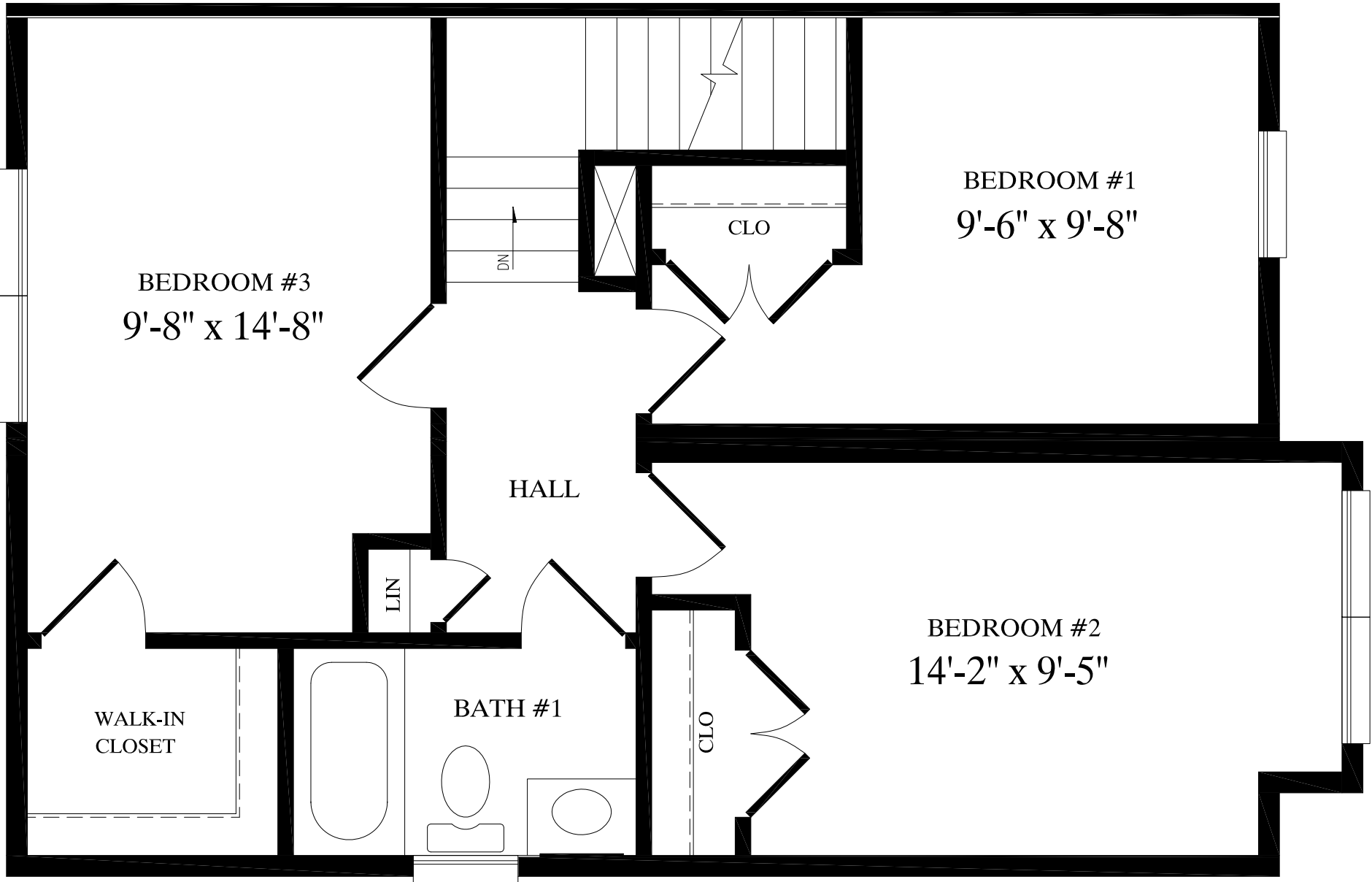
D

BATH #2

CLO

UP

BRIDGEPORT
33'-0" X 42'-0"
1308 Sq. Ft. PER UNIT
2616 TOTAL Sq. Ft.



BEDROOM #3
9'-8" x 14'-8"

BEDROOM #1
9'-6" x 9'-8"

BEDROOM #2
14'-2" x 9'-5"

HALL

BATH #1

WALK-IN
CLOSET

CLO

CLO

LIN

DN